



PROJECT:

# SKAGIT BRIDGE REPAIR

**INDUSTRY:**

Bridges

**PROJECT TYPE:**

Specialized Heavy Rigging

**PROJECT OVERVIEW:**

Move new Skagit River north bridge span into place over 12-hour period

**EQUIPMENT USED:**

Hydraulic jacks, Teflon pads, steel rails, skid beams and power pack

**PROJECT SPECS:**

Replace temporary two sections of the north span with 915-ton permanent bridge span sections. The sections were 160 feet X 30 feet and approx. 450,000 lbs. each. The sections were moved in unison with six skid beams up river on steel rails for 76 feet then set on to the existing column.



Photo © Bill Sauneuf, Skagit Photography



Photo © Bill Sauneuf, Skagit Photography, 360.708.2929

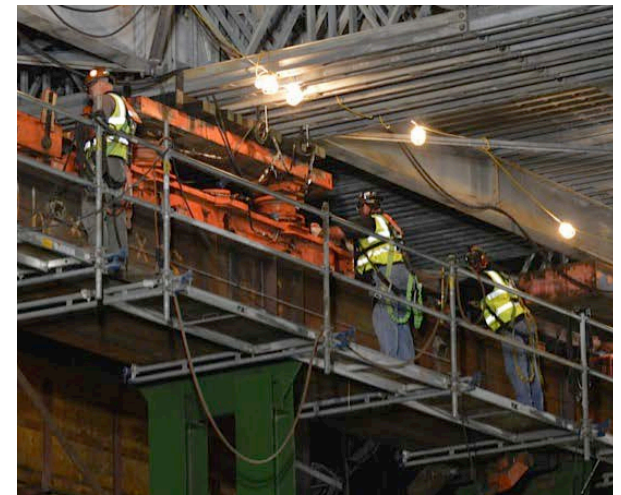


Photo © Bill Sauneuf, Skagit Photography, 360.708.2929